

20

2023
REPORT
TO THE
COMMUNITY

Celebrating 20 Years of Giving



MESSAGE FROM OUR

Board Chair & Executive Director



This has been a milestone year for the Sunshine Coast Foundation, and it is with joy and gratitude that we celebrate the 20th Anniversary of our community foundation’s remarkable journey.

Twenty years ago, a group of visionary individuals came together with a shared dream – to build a stronger, more vibrant Sunshine Coast where everyone belongs. This year, we celebrate not just two decades of existence but two decades of deeply connecting with our community and supporting causes that make a tangible difference.

Many people have helped us get here – from our donors and sponsors to our grant recipients, community volunteers, and staff – we honour all of you as important members of our Sunshine Coast Foundation family.

We would like to take a moment to acknowledge the remarkable contributions of our outgoing Board Chair, Manjit Kang, and extend a warm welcome to our newest Board member, Elizabeth Doucette. We also want to express our thanks and well wishes to outgoing Executive Director, Connie Baxter, and to recognize the dedication and vision of Don Basham, one of our founding members and a driving force behind the Foundation.

In 2023, we achieved re-accreditation under Imagine Canada’s Standards Program, making us one of only 270 charitable organizations across the country recognized for operational excellence. This prestigious Trustmark has been with us since 2016 and it signals to donors that gifts made to the Foundation will be managed with the utmost care, integrity, and transparency.

This year, in the face of a challenging economic landscape, we remain optimistic and fully committed to the long-term goals that drive us. Despite market volatility, we proudly dispersed over \$359,000 in grants to a wide range of local charities, established five new endowments, and received over \$621,000 in gifts.

We are already gearing up for an inspiring and productive 2024. Our Vital Signs Committee is hard at work with plans to publish its latest report in the Spring of next year. This report will offer invaluable insights into the state of our community, guiding efforts to effect positive change.

The opportunities that lie ahead are exciting and challenging. Thank you for being part of this incredible journey. As we look forward to the next twenty years and beyond, we do so with determination and the knowledge that, together, we will continue building a brighter future for our beloved Sunshine Coast community.

Doug Allan
Board Chair

Erin Storey
Executive Director

BOARD OF DIRECTORS

Doug Allan, Chair
Elfie Hofmann, Vice Chair
Judy Rother, Secretary & Volunteer Coordinator
Chad Price, Treasurer
Dave Doig
Elizabeth Doucette
Janice Iverson
Lonnie Propas
Carmen Sombrowski

ADVISORS TO THE BOARD

Don Basham, Vicki Dobbyn, Catharine Esson

COMMITTEE VOLUNTEERS

Sean Eckford, Naomi Fleschhut, Robert Flux,
Stephen Forgacs, Manjit Kang, Milos Pospisil,
Tara Robens, Mike Verhoeven, Denise Woodley

STAFF

Erin Storey, Executive Director
Wendi Rottluff, Finance & Administration
Emily Schach, Communications & Grants

Land Acknowledgement

The Sunshine Coast Foundation is grateful to work in the traditional and unceded territories of the shíshálh (Sechelt) Nation and Skwxwú7mesh Úxwumixw (Squamish Nation). We extend our deepest gratitude to those who have stewarded these beautiful lands over many generations.

What’s Inside

20 Years of Giving	3	Endowments	6
Local Impact	4	Investment Strategy and Performance	7
Grants by Type	5	Vital Signs Update	8

About the Foundation



VISION A healthy and vibrant community where everyone belongs.

MISSION Connecting a caring community with causes that make a difference.

For 20 years, the Sunshine Coast Foundation has been dedicated to making a positive and enduring contribution to the quality of life on the Sunshine Coast. By connecting individuals and families with the causes closest to their hearts, we have established a stable and sustainable pool of funds for charitable giving that responds to the needs of our community, from Port Mellon to Egmont. Our annual grants program, which is made possible by the generosity of our donors, supports everything

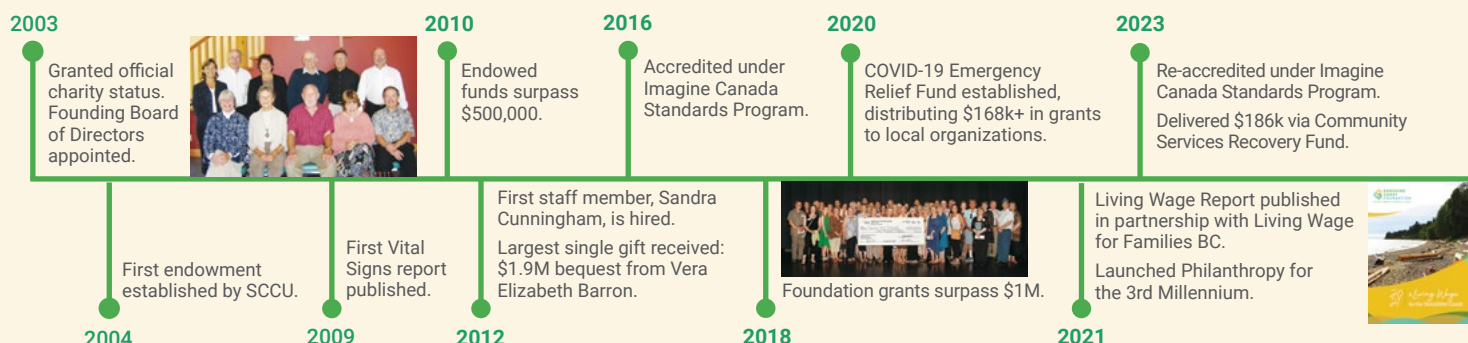
from food and housing insecurity, to sports, the arts, health and wellness, education, the environment, and more. Since forming in 2003, we have grown to steward over \$9.4 million in 84 permanently invested funds, and we have distributed more than \$2.75 million in grants to over 100 local charitable organizations.

In addition to granting, the Foundation also works towards building community knowledge, engagement, and leadership through various partnerships and programs, like Vital Signs, Canada's most extensive community-driven data program. Turn to page 8 for more about our upcoming Vital Signs report.

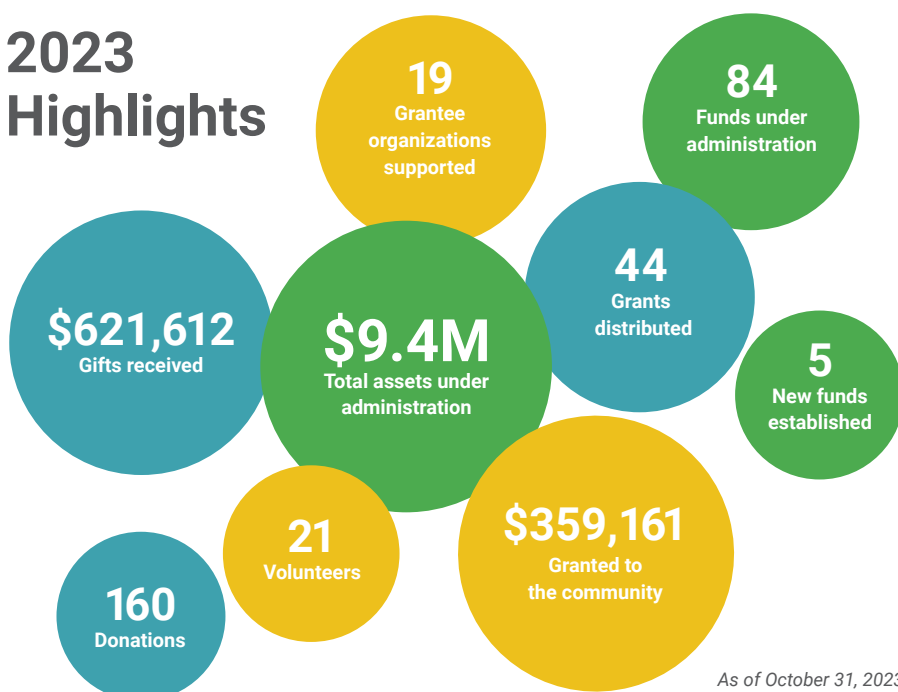
**20 YEARS
OF GIVING**

100+
LOCAL
ORGANIZATIONS
SUPPORTED

**\$2.75+
MILLION**
IN GRANTS
DISTRIBUTED



2023 Highlights



As of October 31, 2023.

Imagine Canada Standards Program

We are incredibly proud to be the first charitable organization on the Sunshine Coast to earn accreditation under Imagine Canada's Standards Program. Accredited in 2016, we successfully completed the rigorous re-accreditation process in 2023, signaling our ongoing commitment to maintain the highest standards of integrity, accountability, and transparency in managing our operations and the funds entrusted with us.



**Accredited
IMAGINE CANADA**

Grant Recipients

RESPONSIVE COMMUNITY GRANTS

Our annual grants program supports local charities with up to \$10,000 in funding for community projects or programs.

BRITISH COLUMBIA CONSERVATION FOUNDATION \$8,800

Restoring Wetlands in ts'ukw'um

GAMBIER ISLAND COMMUNITY ASSOCIATION \$10,000

Advancing Emergency Preparedness & Response Capacities

ONE STRAW SOCIETY \$10,000

Sunshine Coast Tool Library

PARISH OF ST. AIDAN AND ST. BARTHOLOMEW \$10,000

Feeding our Need for Connection

PENDER HARBOUR & DISTRICT HEALTH CENTRE SOCIETY \$10,000

Health and Social Needs Assessment

SUNSHINE COAST ARTS COUNCIL \$8,000

House of Songs Indigenous Gathering Circle

SUNSHINE COAST COMMUNITY SERVICES SOCIETY \$8,000

Parent-Tot Drop-In Family Programs

SUNSHINE COAST HOSPICE SOCIETY \$10,000

Grief Support Program

IMPACT STORIES



Restoring Wetlands in ts'ukw'um

Wetlands are an essential ecosystem providing vital habitats for hundreds of wildlife species, and they perform critical ecosystem services, like water purification, flood control, and climate change resilience. An urgent need exists on the Sunshine Coast to maintain, restore, and enhance wetlands that have been impacted by fire and forest harvesting.

With a \$8,800 grant from the Foundation, the BC Conservation Foundation and Sunshine Coast Wildlife Project have undertaken a community-led project to improve the quantity, quality, and connectivity of wetlands in the ts'ukw'um (Wilson Creek) watershed. Anticipated outputs in the area include 3 new acres of wetland, installation of 100 wildlife habitat features, and planting of 2,000 plants. The project will also involve training and hands-on field opportunities, as well as various educational outreach events for the greater Sunshine Coast community.

"Dave is so happy out there. He called me to say his heart is racing with joy for how well this wetland is working out!"

– Dr Michelle Evelyn, Sunshine Coast Wildlife Project



Building Parental Capacity in our Community

Parent-Tot Drop-In is a free play group program for children offered by the Sunshine Coast Community Services Society (SCCSS). It's a place where families can enjoy quality toys and equipment, while connecting with others in a warm and inviting space. Healthy snacks are provided at each session, and access to community resources, parenting information, and one-on-one support is also offered.

"Families are eager to receive supports and to build relationships in their own community. Being a single parent is a unique experience and being able to provide a safe, non-judgmental, and inspiring space for single parents to connect and build their parental capacity will add a much-needed depth of service to our quality programs."

– Shirley French, Family Resources Lead, SCCSS

With an \$8,000 grant from the Foundation, SCCSS will bolster its Parent-Tot Drop-In program in the Madeira Park, Pender Harbour, and Egmont areas of the Coast, where family programming can be sparse. Additionally, in response to participant feedback, SCCSS will offer a program specifically geared towards single parents, which is a first for the organization.



Tool-Sharing on the Sunshine Coast

For over two decades, One Straw Society (OSS) has shared its vision for a food secure, ecologically sustainable, and connected community and food system on the Sunshine Coast.

In July, with a \$10,000 grant from the Foundation, OSS launched one of its on-the-ground projects: the Tool Library. The first of its kind on the Coast, the Tool Library offers a diverse collection of high-quality tools, from basic hand tools to specialized equipment, for borrowing. Through a nominal membership fee, the library is open to everyone, and prior experience is not required – safety and skills workshops are offered for free.

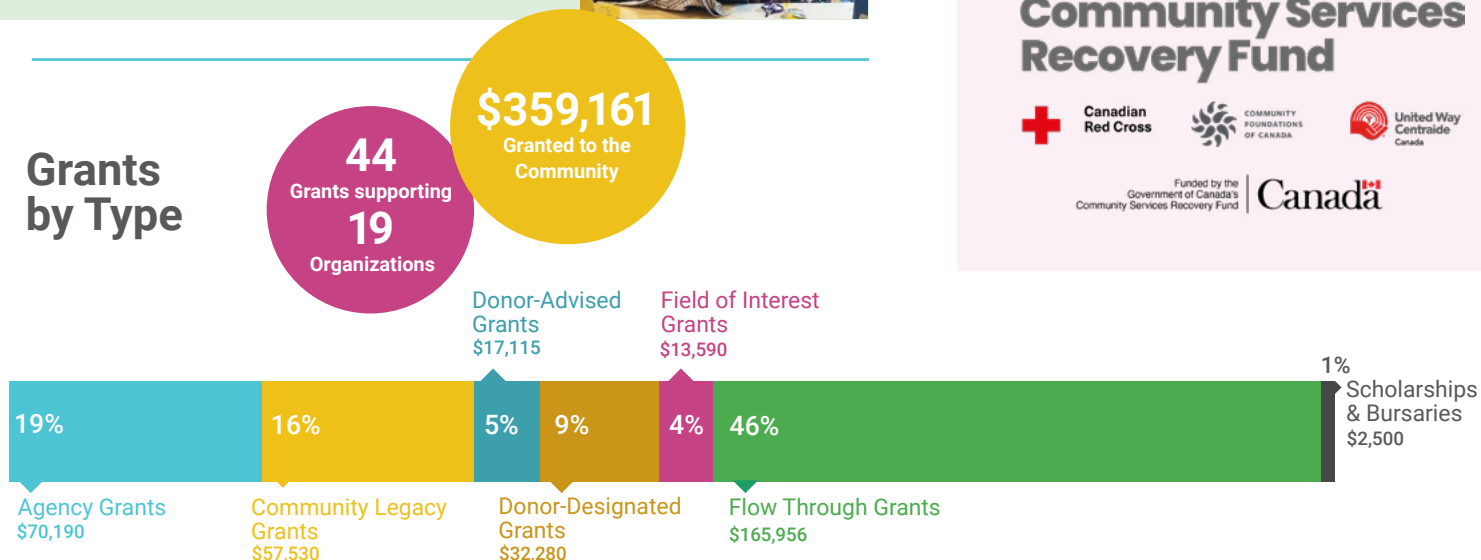
From increasing local food production, to minimizing waste, to promoting social connection, the benefits of a Tool Library are manifold. Over time, as the library's inventory grows, OSS hopes tools will be available for almost any project our community can dream up!

"I have the support of my community in the pursuit of my dream career as a costume designer. It means a lot to me."

– Sealynn Cummings, Bursary Recipient,
Gibsons Landing Fibre Arts Festival Endowment



Grants by Type



Community Services Recovery Fund

This year we had an exciting and unique opportunity to work in collaboration with Community Foundations of Canada, the Canadian Red Cross, and United Way Canada, as part of the Community Services Recovery Fund, a one-time investment of \$400 million from the Government of Canada to help non-profit organizations, Indigenous Governing Bodies and registered charities adapt, modernize, and improve the community services they provide through the pandemic recovery and beyond. In June, \$186,000 in funding was proudly delivered through the Foundation to support five local projects that invest in the systems and processes of an organization's overall structure:

GIBSONS MARINE EDUCATION CENTRE \$10,000

Nicholas Sonntag Website Redesign and Development

PARTNERS IN CHANGE SOCIETY \$18,000

Making Change Work

SUNSHINE COAST COMMUNITY SERVICES SOCIETY \$100,000

Building a Sustainable Structure

SUNSHINE COAST HOSPICE SOCIETY \$36,000

New Fundraising Strategy Development

TRANSPORTATION CHOICES SUNSHINE COAST \$22,000

Connect the Coast Fundraising Plan

Community Services Recovery Fund



Canadian
Red Cross



COMMUNITY
FOUNDATIONS
OF CANADA



United Way
Centraide
Canada

Funded by the
Government of Canada's
Community Services Recovery Fund

Canada

Endowments



Endowments are funds that are professionally invested and managed to create income over the long term. The Foundation awards a portion of that income on an annual basis to support local charities. In 2023, the Foundation established 5 new endowments.

COMMUNITY LEGACY ENDOWMENTS

Provide resources for the Foundation's annual grants program.

Bill & Trudene Longman
Fiedler Family
John & Maria Manley Memorial
Michael & Eileen Poppel
Stewart Family
Sunshine Coast Credit Union
Sunshine Coast Foundation Community Legacy
TELUS Community Ambassadors
Terry & Sandy McBride Family
Vera Elizabeth Barron Memorial

AGENCY ENDOWMENTS

Provide a reliable stream of income to their creators.

Habitat for Humanity Sunshine Coast
Ed & Gwen Hawkins Habitat for Humanity Sunshine Coast
Habitat for Humanity Sunshine Coast
Sunshine Coast Arts Council
Award in Honour of Anne & Philip Klein
Award in Honour of Gillian Lowndes
Award in Honour of Frances Wasserlein
Doris Crowston Endowment
Music Award in Honour of Louise Baril
Sunshine Coast Community Services Society
Daniel Kingsbury Music for Youth
Sunshine Coast Community Services
Sunshine Coast Festival of the Written Arts
Gwen Bennett Endowment
Sunshine Coast Festival of the Written Arts Legacy of Literacy
Moyna Krusell Memorial *

Barrie Wilbee Bursary for Sunshine Coast Entrepreneurs
Canadian Federation of University Women Bursary Committee – Sunshine Coast
Coast Recital Society
Coast-Wide Food Bank
Gibsons Public Art Gallery
Iris Loewen for Sechelt Public Library
Joop & Jesse Burgerjon for Sargeant Bay Society
Marine Rescue for RCMSAR Gibsons, Halfmoon Bay, and Pender Harbour
Pender Harbour & District Health Centre
Robert Allen Memorial
SCF Barron Operating Endowment

Sechelt Seniors Activity Centre *
Sunshine Coast Botanical Garden Society
Sunshine Coast Hospice Society
YMCA Camp Elphinstone Youth Development Fund *

DONOR-DESIGNATED ENDOWMENTS

Direct grants to a specific organization.

Bill & Joan Humphries for the Town of Gibsons
Dickey Family in Support of Sechelt Hospital Foundation
Endowment for Hungry Children
Frank & Muriel Daly Youth in Sports to support KidSport Sunshine Coast
Halfmoon Bay Heritage for Sunshine Coast Museum and Archives
Jack & Sheila Carlson Family for Sunshine Coast Hospice Society
Ken Moore Marine Rescue for Sunshine Coast Marine Rescue Society
Lynn Pakulak for Sunshine Coast Festival of the Written Arts
Marie Steel Memorial for Sunshine Coast Festival of the Written Arts
Robertson/McDonald Marine Conservation and Education for the Nicholas Sonntag Marine Education Centre
Schell Family Endowment for the Sunshine Coast Festival of the Written Arts
Vulnerable Communities on the Sunshine Coast for SCCSS

DONOR-ADVISED ENDOWMENTS

Where donors can influence grant-making.

Bate & Foley Family Endowment to End Homelessness
Baxter Baile Marine Conservation and Education
Chad & Erika Price Family
Crosby/Esson Family
Gibsons Seniors Fund
Glenda Mitchell Memorial in Support of Sunshine Coast Hospice
Hofmann Family for KidSport Sunshine Coast
Howe Sound Pulp and Paper Employees
Jean & Arthur Clarke Endowment
Jennifer Gray Memorial
John & Janey Talbot Family
John Vance Legacy
McFarland Family
Nelson Family
Nicholls Family
Patricia Gray Fund for Animal Welfare
R. Clayton Family

Robert Johnston Family
Rotary Club of Gibsons
Sunshine Coast Youth Sports

FIELD OF INTEREST ENDOWMENTS

Provide funding to specific charitable causes.

Blane & Henny Hagedorn Family for Health & Wellness
Environmental Legacy
Errol Lipschitz & Judy Rother for Food and Shelter
Gibsons Landing Fibre Arts Festival
Kay Chapman Memorial for Health & Wellness or Arts & Culture
Mary & Cecil Gordon/James & Phyllis Parker Family for Seniors *
Sue Milne Memorial Choral
Youth Legacy
Zoe & Gaetan Royer for Accessible Housing

SCHOLARSHIPS AND BURSARIES

Support graduating high school students.

Eleanor Thielke & David Cox Scholarship
Larry Ennis Scholarship in Woodworking
Mary & Cecil Gordon/James & Phyllis Parker Family Scholarship for Nursing and Caregiving *
Robertson/McDonald Family Education for SD46 Sunshine Coast
Sunshine Coast Visual Arts for SD46 Sunshine Coast
Women in STEM Bursary Fund

* Indicates a new endowment



What Are You Passionate About?

When you donate to a community foundation, you make long-lasting local impact and help shape the community for years to come. Let us create a personalized charitable giving plan that reflects your vision and values.

sunshinecoastfoundation.org/give/ways-of-giving



ENDOWMENT SPOTLIGHT

Sunshine Coast Credit Union

For nearly two decades, Sunshine Coast Credit Union has been supporting our mission of connecting a caring community with causes that make a difference. It all started in 2004, when the Sunshine Coast Credit Union made a generous four-year commitment totalling \$100,000 to establish our inaugural Community Legacy fund and set in motion the important work we do on the Sunshine Coast.

"We are honoured to be sharing this journey with the Sunshine Coast Foundation. The alignment between our organizations is rooted in our commitment to defining success based on a long-term vision. While we look to address the needs of today, we also need to ensure the decisions we are making will positively impact generations to come."

– Jodi Fichtner, Chief Impact and Marketing Officer, SCCU



Thanks to their visionary leadership, our pool of Community Legacy funds has grown to over \$2.3 million and, since 2018, the Sunshine Coast Credit Union Endowment has supported a wide range of local causes and initiatives with over \$30,000 in grant disbursements. We are immensely grateful to our local Credit Union for their ongoing support and collaboration. They have been with us every step of the way, sharing in our vision of a healthy and vibrant community where everyone belongs. Together, we are making a lasting difference on the Sunshine Coast.

What is our Community Legacy Fund?

Created in 2004, we refer to this fund as "The Heart of our Foundation." The beauty of this fund is that it evolves with the ever-changing needs of our community and is a primary funding source for our annual grants program in support of local charities. This fund allows us to provide grants to the widest possible range of initiatives, including poverty reduction, arts and culture, food security, housing, healthcare, education, seniors, climate and conservation, youth, and so much more. Whether you have \$10 or \$100,000 to give, a gift to this fund is a forever gift to the Sunshine Coast – the more it grows the more distributions we can make to support those organizations making a tangible difference on the Coast.



Snap this QR code to give a lasting gift to the Sunshine Coast.

DONOR SPOTLIGHT

Len Libin

Most of our donors designate their gifts in support of various charitable causes and organizations on the Coast, so it's a very special day when a donor recognizes that our own operational budget could use a little boost to sustain our work during a period of change and growth. In September, Gibsons-based resident Len Libin made a generous contribution towards our 2024 operations through the Judi Libin Giving Fund. His gift of \$50,000 will greatly extend our reach and deepen our impact in the coming year.

"I am truly inspired by the breadth of the Sunshine Coast Foundation's impact in this community and feel that, to continue doing a successful job, the Foundation itself needs funding. I encourage donors to consider directing part of their future donations as an unrestricted gift to support our community foundation's important work."

– Len Libin

Investment Strategy and Performance

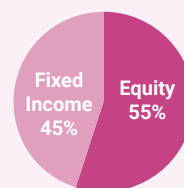
"The primary investment objective of Sunshine Coast Foundation is to provide a balance of safety, income generation and growth of capital over the long term. Our invested capital is strategically allocated to ensure the principles of responsible investing are embedded in our investment decisions.

While recent global events have had an impact on financial markets, the Foundation's Investment and Oversight Committee continues to work closely with our financial advisors to ensure we remain on track to achieve our long-term targets."

– Chad Price, Treasurer and Chair of the Investment & Oversight Committee

Asset Allocation

Investment Capital	1 year	3 years	5 years	10 years
Consolidated Returns	7.9%	2.09%	4.38%	6.55%



As of September 30, 2023.

Annual financial statements are available on our website: www.sunshinecoastfoundation.org/about/reports/

SAVE
THE
DATE

Vital Signs Report Coming in 2024

Vital Signs is a national program led by community foundations and coordinated by Community Foundations of Canada that leverages community knowledge to measure the vitality of communities and support action towards improving our quality of life.

Our Vital Signs Committee, chaired by our co-founder Don Basham, is hard at work preparing a new Vital Signs report for release in Spring 2024. This will be our tenth report since 2009 and will include important and telling data about the post-pandemic condition of our community.

All previous Vital Signs reports published by the Foundation are available on our website:

sunshinecoastfoundation.org/vital-signs

VitalSigns.

AROUND TOWN

Thanks to our generous sponsor, Lamar Transit Advertising, the SCF branded bus will be cruising through Summer 2024.



Get Involved

Interested in supporting the Foundation? We'd love to meet you! We welcome community volunteers to join our Board of Directors, committees, or other initiatives.

Get in touch today:
ed@sunshinecoastfoundation.org

THANK YOU to our donors

We owe a great debt of gratitude to our donors, both new and old, whose generosity fuels our very existence. Thank you for your trust and confidence in our ability to serve our community, now and into the future.

THANK YOU to our funders and corporate sponsors

We sincerely appreciate the contributions and partnerships of the following organizations. Thank you for believing in our vision, for supporting our mission, and for being part of our incredible journey.



Sign Up to get news
delivered right to
your inbox:

sunshinecoastfoundation.org/contact

FOLLOW US on social media for all the latest updates and tag us
with the causes closest to your heart!



@sunshinecoastfoundation



@sunshinecoastfoundation



@SCComFoundation



Sunshine Coast Foundation
P.O. Box 1343, Sechelt, BC V0N 3A0
604.741.7360
ed@sunshinecoastfoundation.org

www.sunshinecoastfoundation.org

Registered Charity Number: 896086105RR0001