



2025 REPORT TO THE COMMUNITY



*Inspiring and Strengthening Community
on the Sunshine Coast*

MESSAGE FROM OUR

Board Chair & Executive Director



We are pleased to share our 2025 Annual Report with you. It reflects another meaningful year of work to inspire and strengthen the place we call home: our Sunshine Coast community.

At its heart, the Sunshine Coast Foundation exists to support the whole community. Together with our fundholders, donors, partners, and volunteers, we take a broad view—one that spans many issues, organizations, and corners of the Coast. This flexibility allows us to respond to what matters most as needs shift and opportunities emerge, while always keeping the long-term well-being of our region in focus.

Last year was filled with real momentum. We welcomed new partners, strengthened long-standing relationships, and continued to support established organizations doing essential work across the Sunshine Coast.

Through new funds, careful stewardship, and strong investment performance, the Foundation's total assets grew to \$12.4 million. That strength translated directly into impact, enabling us to reach our highest granting year to date: \$711,371 distributed to charitable organizations and community partners across the Sunshine Coast.

In 2025, we welcomed several new members into our Foundation family. Thirteen new funds were established, bringing the total number of funds we steward to more than 100. Each represents a unique story of generosity and a lasting commitment to strengthening our community. We were also thrilled to add three new Board members who have approached their new roles with enthusiasm and deep care for our Coast.

Beyond granting, we continued to nurture connections across the community. Through our Vital People/Vital Causes storytelling series, we highlighted individuals and organizations making a difference on the Coast. Our new Coast Together Workshop Series created opportunities for local charities and non-profit organizations to strengthen their governance practices while connecting and collaborating with other leaders on the Coast. We were also proud to be one of just 22 community foundations in Canada selected to deliver Free to Play, an initiative that will bring more than \$350,000 in funding to reignite unstructured, outdoor, child-led play in our region.

As we look ahead, we remain grateful for the trust placed in our Foundation to build community and deliver impactful grants and programs. The momentum we have right now would not be possible without the continued support of our donors, fundholders, partners, and volunteers. Thank you for believing in the power of community. We are proud of what we have accomplished together—and even more excited about what lies ahead.

Doug Allan
Board Chair

Erin Storey
Executive Director

BOARD OF DIRECTORS

Doug Allan, Chair
Elfie Hofmann, Vice Chair
Chad Price, Treasurer
Judy Rother, Secretary
Elizabeth Doucette
Tim Howard
Bob Hoy
Janice Iverson
Kerry Mahlman
Milos Pospisil
Lisa Stiver

ADVISORS TO THE BOARD

Don Basham, Vicki Dobbyn, Dave Doig,
Catharine Esson, Carmen Sombrowski

COMMUNITY VOLUNTEERS

Frances Allen, Bruce Devereux, Douglas Dunn,
Naomi Fleschhut, Robert Flux, Stephen Forgacs,
Chris Fraser, Pat Hunt, Kylie Hutchinson,
Manjit Kang, Chris Neumeyer, Lonnie Propas,
Tara Robens, Denise Woodley

STAFF

Erin Storey, Executive Director
Wendi Rottluff, Finance & Administration
Emily Schach, Communications & Grants
Hailey Miller, Canada Summer Jobs Student

The Sunshine Coast Foundation serves in the Temíxw of the S̓k̓w̓x̓wú7mesh Úxwumixw and the swiya of the shíshálh Nation. We extend our deepest gratitude to the First Nations who have stewarded these lands and waters over many generations. The Foundation's intention is to learn from and collaborate with the Indigenous Peoples of these lands.

What's Inside

2025 Highlights	3	Our Funds	8
Community Grants	4	Investment Strategy and Performance	10
Local Impact	6	Community Leadership	11

About the Foundation



VISION A healthy and vibrant community where everyone belongs.

MISSION Connecting a caring community with causes that make a difference.

Community foundations are rooted in the places they serve, bringing people together to strengthen community well-being. By pooling resources, building wealth over time, and listening to diverse voices, they support solutions that respond to changing needs and reflect what matters most locally.

Since 2003, the Sunshine Coast Foundation has served this role on the Coast, turning charitable gifts into lasting community benefit. We steward funds from individuals, families, businesses, and organizations, each with its own purpose, while offering flexible ways to give. Most are invested as endowed funds, with

annual income granted to support local charities now and for generations.

Our granting spans priorities from food and housing security to arts, youth, health, education, and the environment, adapting as needs and opportunities evolve while keeping long-term well-being in focus. Today, we steward \$12.4 million across 100+ funds and have distributed over \$4.3 million in grants since 2005.

We also act as a convener, bringing people together to learn, share, and collaborate. We do this through partnerships and initiatives that build capacity in our charitable sector, such as Coast Together—a free workshop series for local non-profits—and Vital Signs, Canada’s most extensive community driven data program that helps identify trends and sparks conversations about what well-being can look like on the Coast.

YEAR IN REVIEW

JANUARY

Sunshine Coast Prosperity Fund Launched



MAY

Community Foundations of Canada Conference in Halifax



NOVEMBER

Inaugural Coast Together Workshop



10th Vital People/Vital Causes

MARCH

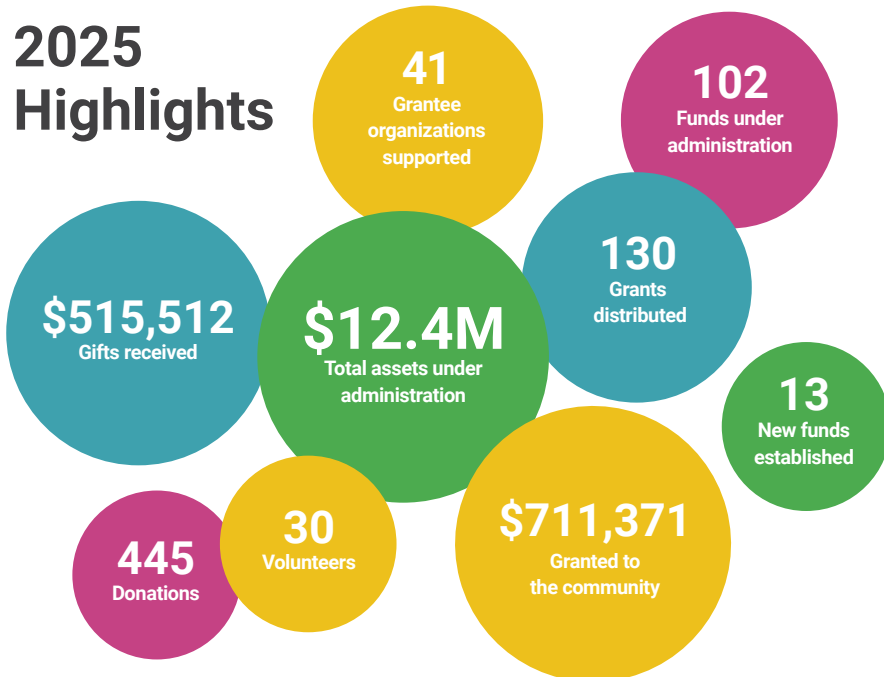
International Women's Day Multigenerational Potluck

OCTOBER

2nd Annual Gratitude Gathering

DECEMBER

2025 Highlights



As of December 31, 2025.

Imagine Canada Standards Program

We are incredibly proud to be the first charitable organization on the Sunshine Coast to earn accreditation under Imagine Canada’s Standards Program. As part of a growing network of over 280 accredited charities across Canada, we hold ourselves to the highest standards of integrity, accountability, and transparency. Originally accredited in 2016, we successfully completed the rigorous re-accreditation process in 2023, reaffirming our ongoing commitment to effective organizational practices that strengthen our ability to serve and support the Sunshine Coast community.



Responsive Community Grants

Our annual community grants program supports local charities with up to \$10,000 in funding for community projects or programs.



“This shared resource will strengthen collaboration, support innovation, and help our community respond more effectively to housing challenges now and into the future.”

– Kelly Foley, Sunshine Coast Regional Housing Coordinator

Housing Solutions Hub

With a focus on low-income households, seniors, working-age adults, and families, the Sunshine Coast Charitable Housing Society is guided by the vision of “Housing for All.”

With a \$10,000 grant from the Foundation, the Housing Solutions Hub was brought to life. This new online platform is designed to support practical, community-led housing solutions across the Sunshine Coast.

By integrating local research, housing directories, building regulations, funding opportunities, and step-by-step implementation tools in one accessible place, the Hub is tailored specifically for rural communities. It helps residents, landlords, non-profits, and community partners better understand their housing options and move confidently from idea to action.



“At RJPC, we envision a community where harm is addressed through understanding, accountability, and healing, and where relationships are strengthened.”

– Tatiana Velasquez, Operations & Communications Keeper

Paths to Healing

Through trained volunteers and trauma-informed restorative justice processes, the Restorative Justice Program of the Sunshine Coast (RJPC) brings together those who have been harmed and those responsible for that harm in a facilitated dialogue.

These conversations create space for accountability, repair, and rebuilding trust, strengthening relationships across the community. A \$10,000 grant from the Foundation supported RJPC’s efforts to expand services throughout the Sunshine Coast, while also increasing opportunities for training, mentorship, and community dialogue circles.

These initiatives equipped community members with practical tools to address conflict and repair harm in schools, workplaces, neighbourhoods, and families. In 2025, RJPC supported 117 victims of direct harm, helping to foster a safer, more connected community.

2025 RESPONSIVE COMMUNITY GRANTS RECIPIENTS

BRITISH COLUMBIA CONSERVATION FOUNDATION \$10,000

Restoring Wetlands for Wildlife

COMMUNITY FIRST FOUNDATION \$5,000

Backpack Buddies Sunshine Coast

DEER CROSSING THE ART FARM \$10,000

Ripped Open: Youth-led Anti-fashion

GIBSONS & DISTRICT PUBLIC LIBRARY \$4,750

Accessible Equipment

GIBSONS LANDING HERITAGE SOCIETY \$8,500

Heritage Playhouse Stage Refurbishment

LIVING FAITH LUTHERAN CHURCH \$9,900

Enhancing Accessibility for Community

PENDER HARBOUR COMMUNITY IMPROVEMENT FOUNDATION \$10,000

Accessible Doors for the Community Hall

PENDER HARBOUR READING CENTRE SOCIETY \$5,995

Reading Centre Upgrades

RESTORATIVE JUSTICE PROGRAM OF THE SUNSHINE COAST \$10,000

Expanding Our Reach: Phase II

Responsive Community Grants



“Every day that we are open, a new person wanders in...exploring the space and looking for ways to engage and participate.”

– Chad Hershler, Founder & Co-Director

A Space to Create

At Deer Crossing The Art Farm, community members of all ages are invited to explore art, share stories, and build connections in unexpected places.

In 2025, a \$10,000 grant from the Foundation helped bring that vision to life through “Ripped Open,” a youth-led art studio initiative located in Sunnycrest Mall. The welcoming space provided over 50 young people with free access to supplies and equipment for experimenting with fashion, film, and art, while connecting with other artists, mentors, and locals across generations.

“Ripped Open” quickly became a vibrant hub of creativity and belonging, where new voices and ideas mingled and emerged.



“Our mission is to improve the quality of life for Coastal residents through care, education, and advocacy, while fostering a strong network of trained volunteers.”

– Nancy Grenier, Manager, Development and Community Partnerships

Care in Community

Sunshine Coast Hospice offers support wherever it is needed: in hospitals, long-term care, or at home. Their network of 100+ trained volunteers provide grief support and help people navigate the emotional challenges that can accompany caregiving, bereavement, and life-limiting illness.

A \$10,000 grant from the Foundation supported Hospice’s Grief Support Program, helping coordinate volunteers, respond to referrals from healthcare providers, and expand access to counselling. In 2025, Hospice’s volunteers provided more than 2,500 hours of direct support, reaching over 1,300 individuals and families across the Coast, to ensure no one faces grief or loss alone.

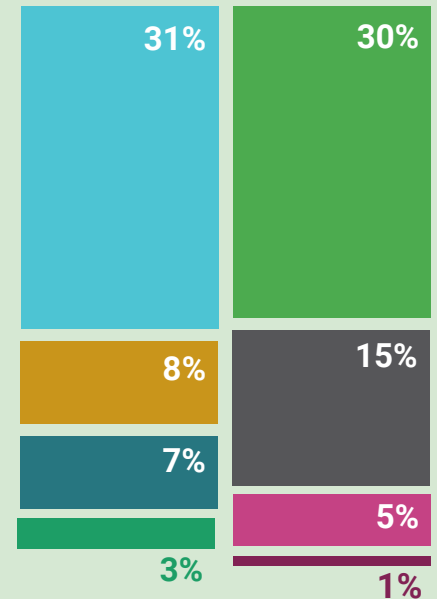
“This project is a significant positive step towards providing affordable organic produce for clients of the St. Bart’s Food Bank.”

– Pamela McElheran, Coordinator, St. Bart’s Food Bank



Grants by Type

Sunshine Coast Prosperity Fund Grants	\$220,000
Agency Grants	\$214,509
Community Legacy Grants	\$105,545
Donor-Advised Grants	\$57,000
Donor-Designated Grants	\$50,460
Field of Interest Grants	\$32,870
Flow-Through Grants	\$21,327
Scholarships & Bursaries	\$9,660



2025 RESPONSIVE COMMUNITY GRANTS RECIPIENTS CONT'D

ST. BART'S FOOD BANK \$10,000
Organic Produce Project

SUNSHINE COAST CHARITABLE HOUSING SOCIETY \$10,000
Housing Solutions Hub

SUNSHINE COAST COMMUNITY SERVICES SOCIETY \$10,000
Parent and Tot Drop-In

SUNSHINE COAST FESTIVAL OF THE WRITTEN ARTS \$10,000
CABC Writer-in-Residence Program

SUNSHINE COAST HOSPICE SOCIETY \$10,000
Grief Support Program

SUNSHINE COAST MUSEUM & ARCHIVES \$10,000
Japanese Community Histories

THE JELLYFISH PROJECT \$8,750
Climate Cafés for Youth, by Youth

Local Impact

Our community is made stronger by people who care, deeply and personally, about a wide range of causes. Through the Foundation, donors bring their own passions to their giving, transforming individual commitments into collective impact across our region. These Cause Spotlights highlight just two examples of how care became action in 2025.

ANIMAL WELFARE

Animal welfare is a cause that resonates strongly with many in our community. In 2025, grants made through the **Terry Kvam Fund for Animal Welfare**, alongside support from the **Patricia Gray Fund for Animal Welfare**, helped strengthen organizations working at every stage of care—from rescue and rehabilitation to lifelong well-being—helping animals receive safety, comfort, and a chance to thrive.



Allie

Kitchensink Rescue Farm & Animal Sanctuary

Support from the Foundation made it possible for Kitchensink Rescue Farm & Animal Sanctuary to provide specialized veterinary care to animals with complex, lifelong needs, ensuring comfort, dignity, and long-term well-being.

“Because of this support, Allie received critical dental care that directly improved her quality of life and prevented long-term suffering. She is now comfortable, eating normally, and bright and happy. From all of us, and from Allie herself, thank you for being part of her story.”

ElderDog Sunshine Coast

The Foundation’s funding helped ElderDog Sunshine Coast provide essential veterinary care for senior dogs, enabling safe rehoming and supporting the well-being of both animals and older adults in our community.

“This support has made a profound difference in the life of one of our beloved ElderDogs, Marley. He received the dental work and medical care he so desperately needed to restore his health. Marley is now thriving and has found a loving home with a senior who was also looking for companionship.”

BC SPCA Sunshine Coast

With grants from the Foundation, the BC SPCA Sunshine Coast welcomed animals into care, providing medical attention, shelter, and a safe place to begin again, while supporting regional collaboration across communities.

In addition, commitments and planning undertaken in 2025 through the **Linda Reha-Krantz Fund for Animals, Women and Children** laid the groundwork for a significant gift that will be made to the BC SPCA Sunshine Coast in 2026.

“Paloma is the last of her litter waiting for her forever home, and she has brought so much joy to our staff and volunteers. Animals like her, and many more to come, will be supported because of this thoughtful and generous gift.”



Marley



Paloma

Every impact featured here began with a donor’s personal passion.

As a community foundation, we work closely with donors to understand what matters most to them and help translate those values into lasting local impact. Whether your interests are broad or deeply specific, the Foundation offers personalized charitable giving options that allow you to support the causes closest to your heart.

If you’re passionate about making a difference, we invite you to connect with us. Together, we can shape a giving plan that reflects your vision and strengthens our community for years to come:

www.sunshinecoastfoundation.org/why-give-with-us/

What Are You Passionate About?

Local Impact

YOUTH

At YMCA Camp Elphinstone, youth development happens through experiences that challenge, inspire, and build confidence. In 2025, a grant from the **YMCA Camp Elphinstone Youth Development Fund**, established in honour of Mary Gordon, helped ensure these experiences were safe, accessible, and deeply meaningful for young people.



CAUSE SPOTLIGHT

The Foundation's funding strengthened wilderness and overnight programming, equipping campers for leadership out-trips and extended outdoor expeditions. Through shared challenges, time in nature, and moments of responsibility, youth developed resilience, teamwork, and confidence in themselves.

This support reflects the power of passionate giving, where a donor's commitment becomes an opportunity for young people to discover what they are capable of and carry those lessons forward long after camp ends.

"I learned so much about what it takes to lead," recalls Maya, a leadership development camper. "I followed the map, helped set up camp, gave people jobs, helped anyone who was struggling, and tried to keep everyone's spirits up when the weather got bad."

One night, Maya even volunteered to cook dinner on the new stoves, and felt it was the best soup she'd ever had.

As her journey came to an end, Maya reflected on how far she had come, "I arrived thinking I couldn't do this, but I was finishing the out-trip with more confidence in myself!"



"This project has effectively enabled us to reduce barriers to participation in library services. People who are unable to come to the library are now able to get their materials delivered and picked up. This is a major step forward in the library being accessible to everyone."

– Heather Evans-Cullen, Library Director
Gibsons & District Public Library



Sunshine Coast Prosperity Fund

In March, the Foundation awarded \$220,000 to six local charities through multi-year operational and program funding, providing the stability and flexibility needed to grow sustainably and deepen their long-term impact.

The Sunshine Coast Prosperity Fund helped these local organizations focus on lasting impact rather than short-term fundraising pressures. Backed by the Government of British Columbia, the Fund enabled the charities to plan ahead, build capacity, and respond more effectively to evolving community needs.

2025 Sunshine Coast Prosperity Fund Recipients

Gibsons & District Public Library – \$28,300

Accessible Library Services Project

One Straw Society – \$40,000

Capacity Building for Food Security & Community Resiliency

Pender Harbour & District Health Centre Society – \$31,700

Pender Connection: Bringing Resources to Pender Harbour

Restorative Justice Program of the Sunshine Coast – \$40,000

Long-Term Community Building Through Restorative Justice

Sunshine Coast Charitable Housing Society – \$40,000

Stronger Foundations: Building Housing Solutions on the Coast

Sunshine Coast Hospice Society – \$40,000

Increased Capacity for Community Programs & Services

Funded by the Government of British Columbia through the Community Prosperity Fund.



"Informed by the evidence of limited public transportation options, lack of service assistance and an older and more isolated demographic, the Pender Connection series has begun to build an important bridge between the services offered at the Sunshine Coast Resource Centre in Sechelt and the community of Pender Harbour."

– Nick Gaskin, Executive Director, Pender Harbour Health Centre & Chris Hergesheimer, Community Development Manager, Sunshine Coast Resource Centre

Our Funds

We offer a variety of fund types to help donors achieve their charitable goals while strengthening our community. Each fund provides different levels of flexibility, involvement and focus, allowing donors to choose the approach that best matches their vision for giving. In 2025, the Foundation established 13 new funds.

* Indicates a new fund in 2025.

ENDOWED FUNDS

COMMUNITY LEGACY

Provide resources for the Foundation's annual grants program.

Bill & Trudene Longman Endowment Fund
Fiedler Family Endowment
John & Maria Manley Memorial
Michael & Eileen Poppel Endowment Fund
Stewart Family Endowment
Sunshine Coast Foundation Community Legacy Fund
Sunshine Coast Credit Union Endowment
TELUS Community Ambassadors Endowment
Terry & Sandy McBride Family Endowment
Vera Elizabeth Barron Memorial

AGENCY

Established by charities to support their own operations.

Coast Recital Society
 Coast Recital Society Endowment Fund
 Frances Heinsheimer Wainwright Fund for Musical Excellence*

Habitat for Humanity Sunshine Coast
 Ed & Gwen Hawkins Habitat for Humanity Sunshine Coast Endowment
 Habitat for Humanity Agency Endowment

Sunshine Coast Arts Council
 Doris Crowston Endowment Fund
 Endowment in Honour of Anne & Philip Klein
 Endowment in Honour of Frances Wasserlein
 Endowment in Honour of Gillian Lowndes
 Music Award in Honour of Louise Baril

Sunshine Coast Community Services Society
 Daniel Kingsbury Music for Youth Endowment
 Sunshine Coast Community Services Society Agency Endowment

Sunshine Coast Festival of the Written Arts
 Al and Eurithe Purdy Endowment*
 Gwen Bennett Endowment
 Moyna Krusell Memorial Endowment
 Sunshine Coast Festival of the Written Arts Legacy of Literacy Fund

Canadian Federation of University Women-Sunshine Coast Bursary Fund
Coast-Wide Food Bank Endowment
Gibsons Public Art Gallery Endowment Fund
Iris Loewen Endowment for Sechelt Public Library
Joop & Jessie Burgerjon Endowment for Sargeant Bay Society
Marine Rescue Agency Fund
One Straw Society Endowment Fund*
Pender Harbour & District Health Centre Endowment
Pender Harbour Music Society Endowment*

Robert Allen Memorial Endowment
SCF Barron Operating Endowment
Sechelt Seniors Activity Centre Endowment Fund
Sunshine Coast Botanical Garden Society Endowment
Sunshine Coast Conservation Association Endowment*
Sunshine Coast Hospice Society Endowment
Sunshine Coast Museum and Archives Endowment Fund*
YMCA Camp Elphinstone Youth Development Fund

DONOR-DESIGNATED

Direct grants to a specific organization.

Alanna Wood Fund for Visual Arts*
Bill & Joan Humphries Endowment
Dickey Family Endowment in Support of Sechelt Hospital Foundation
Endowment for Hungry Children
Frank & Muriel Daly Sunshine Coast Endowment to Support Youth in Sports
Halfmoon Bay Heritage Endowment
Jack & Sheila Carlson Family Endowment
Ken Moore Marine Rescue Endowment
Lynn Pakulak Endowment
Marie Steel Memorial Endowment
Robertson/McDonald Marine Conservation and Education Endowment
Rudland Fund for the Sunshine Coast Natural History Society*
Schell Family Endowment
Smith Family Fund for Vulnerable Communities
Valerie Boxer Fund*

DONOR-ADVISED

Where donors can influence grant-making.

Barrie Wilbee Bursary for Sunshine Coast Entrepreneurs
Bate & Foley Family Endowment to End Homelessness
Baxter Baile Marine Conservation and Education Endowment
Chad & Erika Price Family Endowment
Crosby/Esson Family Endowment
Gibsons Seniors Fund
Glenda Mitchell Memorial Endowment in Support of Sunshine Coast Hospice
Hofmann Family Endowment
HSPPEmployee Endowment
Jean & Arthur Clarke Endowment
Jennifer Gray Memorial Endowment
John & Janey Talbot Family Endowment
John Vance Legacy Fund
McFarland Family Endowment

Nelson Family Endowment
Nicholls Family Endowment
Patricia Gray Fund for Animal Welfare
R. Clayton Family Endowment
Robert Johnston Family Endowment
Rotary Club of Gibsons Endowment
Storey Family Fund for Active Living*
Sunshine Coast Youth Sports Endowment

FIELD OF INTEREST

Provide funding to specific charitable causes.

Bev Shaw Literacy Fund
Blane & Henny Hagedorn Family Endowment
Bob Hunt Endowment for the Arts*
Environmental Legacy Fund
Errol Lipschitz & Judy Rother Fund for Food and Shelter
Gibsons Landing Fibre Arts Festival Endowment
Kay Chapman Memorial Fund
Mary & Cecil Gordon/James & Phyllis Parker Family Fund for Seniors
Sue Milne Memorial Choral Fund
Terry Kvam Fund for Animal Welfare
Youth Legacy Fund
Zoe & Gaetan Royer Fund for Accessible Housing

SCHOLARSHIPS AND BURSARIES

Support graduating high school students.

Elaine Sanders Scholarship Fund for Nursing
Eleanor Thielke & David Cox Scholarship Fund
Larry Ennis Scholarship in Woodworking
Mary & Cecil Gordon/James & Phyllis Parker Family Scholarship Fund for Nursing and Caregiving
Patrina Thomson Memorial for Music and Dance
Robertson/McDonald Family Education Endowment
Sunshine Coast Endowment for Visual Arts
Talia Sweet Memorial Scholarship
The Women in STEM Bursary Fund

NON-ENDOWED FUNDS

FLOW-THROUGH

Donations are expedited to support a specific charity or cause.

Free to Play Fund*

SPEND-DOWN

Designed to distribute all assets within a set timeframe.

Pender Harbour Music Society Programming Fund*

For more information about what each fund supports, please visit:

<https://sunshinecoast.fcsuite.com/erp/donate/list>



Spend-Down Funds

LEAVING A LEGACY

A community foundation is your community's forever fund, growing over time and giving back through local grants. Fueled by local generosity, a community foundation invests in what matters most and creates lasting change for generations to come.

With a personalized approach, we offer tailored solutions that empower individuals, families, and organizations to make meaningful contributions—ensuring giving, in any amount, is impactful, accessible, and deeply connected to community needs.



EXISTING FUND

We steward 100+ funds supporting a wide range of community needs and interests. You can contribute in the way that works best for you, whether through a one-time gift, a recurring monthly donation, or an annual contribution.



CREATING YOUR OWN FUND

If you are looking to make a more significant gift, consider opening your own fund. For donors who want to have an impact over many generations, we continue to welcome and support permanent endowments. The Foundation also offers other fund structures beyond the traditional endowment model.



LEAVE A GIFT IN YOUR WILL

Fulfill your charitable wishes by leaving a gift to the Foundation in your will. You can also establish a fund today and pledge to endow it later through an estate gift. Either way, a gift in your will is a meaningful way to create lasting impact beyond your lifetime. An added benefit is flexibility—changes to how your fund operates can be made during your lifetime without requiring updates to your will.

Since our inception in 2003, endowed funds have been at the heart of our work, creating a steady, reliable source of support that strengthens our community for the long term. That legacy remains as important as ever.

At the same time, we're hearing from more donors who are eager to see their gifts make a difference sooner. In response, we introduced a new fund option in 2025: the spend-down fund. Unlike traditional endowments, spend-down funds are designed to distribute both income and principal over a set period of 5, 10, or 20 years. They offer a distinct approach to giving: longer-term support than a one-time gift, with funds reaching the community for timely, targeted impact.

"We're proud to establish the Foundation's first spend-down fund in 2025, strengthening Coast-wide music, education, and cultural programming through the Pender Harbour Music Society."

- Virginia Byrnes-McKnight, Chair, Pender Harbour Music Society

Endowment Spotlights

Community Legacy Fund



Created in 2004, we refer to the Community Legacy Fund as *the heart of our Foundation*. It responds to the evolving needs of our community and serves as a primary funding source for our Responsive Community Grants program supporting local charities.

The Fund helps us respond where the need is greatest. Each year, grant requests are roughly double the funds available, leaving critical work unfunded. By supporting the Community Legacy Fund, you help close this gap, ensuring more local organizations can deliver essential services across the Coast.

Frances Heinsheimer Wainwright Fund for Musical Excellence



Frances Heinsheimer Wainwright (1942–2025) was a distinguished leader in Canadian classical music and a transformative Artistic Director of the Coast Recital Society. A former CBC Radio music producer with keen artistic judgment, she curated concert series of exceptional quality for over 20 seasons, attracting world class artists to the Sunshine Coast and enriching the cultural life of our community.

Frances is remembered for her warmth, dedication, and joy in community-building. Her legacy is honoured through the Frances Heinsheimer Wainwright Fund for Musical Excellence. Established in 2025, the Fund will provide annual grants to the Coast Recital Society to support outstanding classical music and musicians on the Sunshine Coast.

Investment Strategy and Performance

“The primary investment objective of the Sunshine Coast Foundation is to provide a balanced approach to capital preservation, income generation, and long-term growth. Our invested capital is allocated strategically to ensure that responsible investing principles remain embedded in all our decisions.

The past year delivered strong results for the Foundation, especially within today’s dynamic global context. While today’s economic and geopolitical environment has the potential to disrupt markets, the Foundation’s Investment and Oversight Committee continues to work closely with our investment managers to ensure the portfolio remains well diversified and aligned with our long-term goals.”

– Chad Price, Treasurer and Chair of the Investment & Oversight Committee

Consolidated Returns

Investment Capital	1 year	3 years	5 years	10 years
Consolidated Returns	9.06%	12.25%	6.40%	7.16%

Asset Allocation

Equity 61%

Fixed Income 39%

As of December 31, 2025.

Annual financial statements are available on our website:

www.sunshinecoastfoundation.org/about/reports/

Frequently Asked Questions

We asked Chad Price, Treasurer and Chair of the Investment & Oversight Committee, to respond to some of the most common questions we hear from current and prospective donors and fundholders.



Q: Is a large gift required to start a fund?

A: Funds can be established with as little as \$5,000, and gifts of any amount are welcomed to support existing funds or causes.

Q: How are the Foundation’s funds managed?

A: Most of the Foundation’s assets are pooled and professionally invested through two investment management firms, Jarislowsky Fraser and Phillips Hager North, in alignment with the strategy set by our Board. Our Investment and Oversight Committee meets regularly to monitor performance, discuss opportunities, and ensure the portfolio remains aligned with the Foundation’s long-term goals.

Q: How much of my donation supports administration?

A: Endowed funds are charged an annual administrative fee of 1.75–2% to cover the essential expenses associated with our charitable work including donor stewardship, grant processing, accounting, and compliance, as well as community engagement and leadership initiatives such as Vital Signs and the Coast Together Workshop Series.

Q: How can donors contribute to the Foundation’s long-term sustainability?

A: Consider a gift to the Barron Operating Endowment Fund. This permanent fund supports the Foundation’s core operations, which are currently covered substantially by the annual administrative fee on each fund. For donors who see the big picture, this is a unique opportunity to strengthen the Foundation itself—building long-term sustainability and amplifying the impact of our work across the Sunshine Coast for generations to come.

Q: How do you ensure transparency and accountability?

A: The Foundation ensures transparency and accountability through strong financial oversight and continuous improvement of our governance practices. In 2025, Crowe MacKay conducted our first full financial audit of our 2024 financial statements. We maintain a rigorous policy review schedule to support responsible stewardship. The Foundation is proud to be one of only 280 charities in Canada to achieve Imagine Canada Standards Accreditation, recognizing excellence in non-profit governance and operations.

Community Leadership



Coast Together Workshop Series

The Coast Together Workshop Series was created in direct response to conversations with local non-profits who identified a growing need for practical, accessible support around governance, particularly in areas like financial literacy, risk oversight, and board leadership.

With generous support from our sponsors and funders, we were able to offer the inaugural workshop—*Financial Governance for Charities and Non-Profits*—at no cost, removing a major barrier for organizations often stretched thin and unable to invest in professional development.

Held on November 19th at the Sunshine Coast Botanical Gardens, two three-hour sessions were facilitated by Gordon Holley, CPA, CA, FCPB.

Participants explored board and staff responsibilities related to financial governance, learned how to better understand financial statements, identify and manage financial risk, and strengthen overall organizational financial wellness. Across both sessions, 56 attendees representing 38 different local charities and non-profits attended free of charge.

The strong turnout and enthusiastic feedback reflected a clear appetite for shared learning opportunities and affirmed the Coast Together Workshop Series as a valuable platform for community leadership development, laying the groundwork for continued programming in 2026.



"The information provided before and during the workshop was exactly what I needed to better understand how to manage the finances of the charity I work with. I will apply the ideas shared by Gordon and the other participants to the challenges and opportunities we face going forward."

– Paul Leroux, Board Member,
Sunshine Coast Salmonid Enhancement Society



Free to Play

Created by Community Foundations of Canada with support from the Waltons Trust, the Lawson Foundation, and Canadian Tire Jumpstart Charities, Free to Play responds to the reality that childhood play has changed. Children are spending less time outdoors and more time indoors, on screens, and in structured activities.

On the Sunshine Coast, the Foundation will distribute more than \$350,000 in funding over the next two years, helping local partners to reduce barriers to unstructured outdoor play and supporting a long-term cultural shift that values outdoor play as a joyful, essential part of growing up.

As this work begins to take shape across the Coast, the first cohort of funded projects will be announced in mid-2026, with additional learning and a future funding round to follow.

Children are spending less time outside and more time on screens.¹

In a typical week:

- Almost 25% of local Grade 5 students reported never playing at a playground, park or in their neighbourhood
- Only 27% of local Grade 6 students met the recommended 60 minutes of daily physical activity
- 23% of local Grade 8 students reported watching TV or streaming services for 4+ hours per day

To deepen the impact of Free to Play, we created the **Free to Play Fund**, where 100% of community contributions will support local projects that increase access to unstructured outdoor play.

Our goal is to grow this fund by an additional \$100,000 through financial and in-kind contributions to create more opportunities for children to play their own way.



¹Source: Middle Years Development Instrument [MDI] Grade 5, 6, and 8 reports. School District Results, 2024-2025. Sunshine Coast (SD46).

Thank You to Our Donors

We owe a great debt of gratitude to our donors, both new and old, whose generosity fuels our very existence. Thank you for your trust and confidence in our ability to serve our community, now and into the future.

Thank You to Our Corporate Sponsors and Funders

We sincerely appreciate the contributions and partnerships of the following organizations. Thank you for believing in our vision, for supporting our mission, and for being part of our incredible journey.



Share Our Story

Help us spread the word!

Download a digital copy of this report and pass it along to your family, friends, colleagues or neighbours.



Get Involved

Interested in supporting the Foundation?

We'd love to meet you! We welcome community volunteers to join our Board of Directors, committees or other initiatives.

Follow Us

Stay updated on social media and tag us with the causes closest to your heart!

@sunshinecoastfoundation

Sign Up

Get news delivered to your inbox:

www.sunshinecoastfoundation.org/contact



Sunshine Coast Foundation
P.O. Box 1343, Sechelt, BC V0N 3A0
604.741.7360
ed@sunshinecoastfoundation.org

www.sunshinecoastfoundation.org

Registered Charity Number: 896086105RR0001